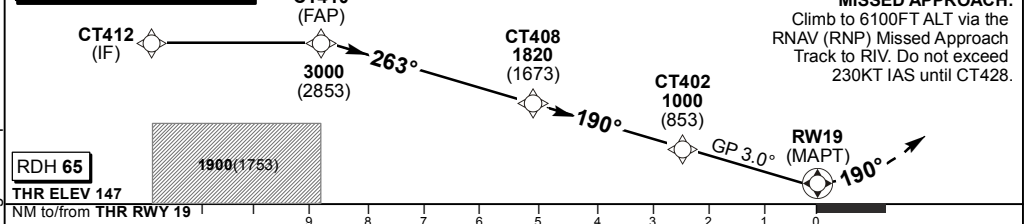


DIST (NM) to THR 19	8.8	7	6	5	4	3	2.5	0
DIST (NM) to Next WPT	FAP	7	6	CT408	4	3	CT402	RW19
ADVISORY ALT (HGT)	3000 (2853)	2430 (2283)	2110 (1963)	1820 (1673)	1480 (1333)	1160 (1013)	1000 (853)	

**TRANSITION ALT 7500
TRANSITION LEVEL ATC**

INA ALT: 6100 or higher MSA



RDH 65		THR ELEV 147		NM to/from THR RWY 19		9	8	7	6	5	4	3	2	1	0
MIN TEMP: -1°C		C		D		GS		KT		80	100	120	140	160	
Straight-in Approach	RNP 0.3	3.1%		490 (343)	490 (343)	FAP to MAPT		M:S	6:36	5:16	4:24	3:46	3:18		
		2.8%		970 (823)	970 (823)	Rate of descent		FPM	422	528	634	739	845		
		2.5%		1520 (1373)	1520 (1373)	NOTE:		1. For A330, speed brake may be required to maintain the vertical profile.							
Circling	1. Circling approaches between 010°M & 160°M are not authorised for CAT C & D aircraft. 2. Circle to land at the discretion of the pilot in command.														

CHANGE: No other changes were performed

APP Frequency changed only